

V3 1909

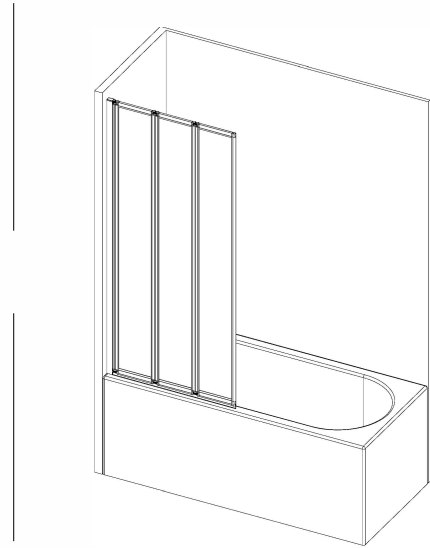
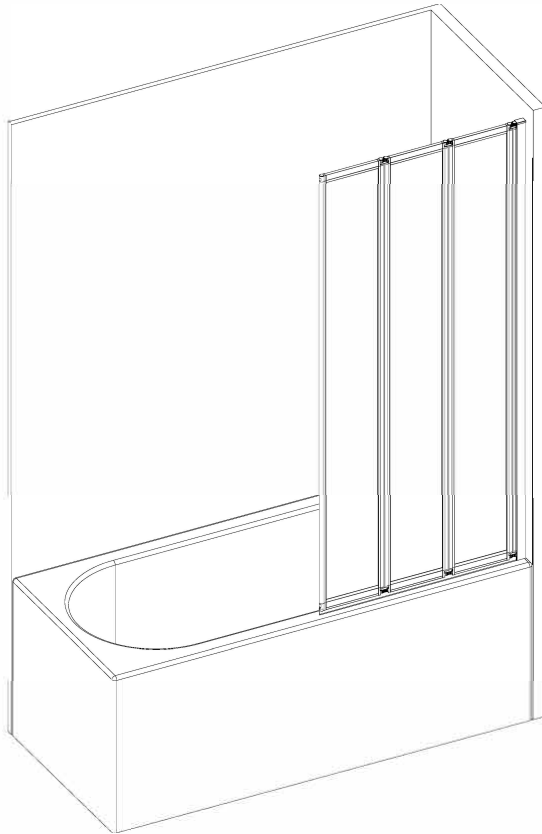
# REF FAC277

## TRIPLE WHITE

### H1430xW125 MM

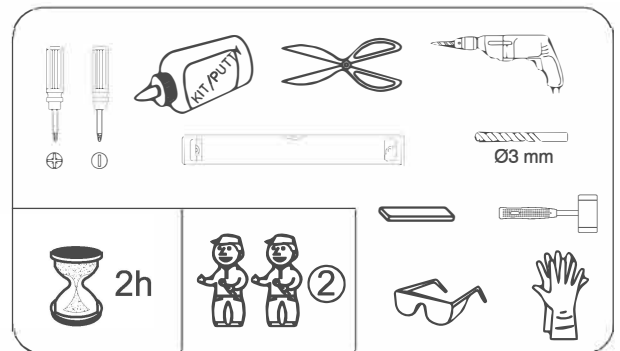


# AURLANE



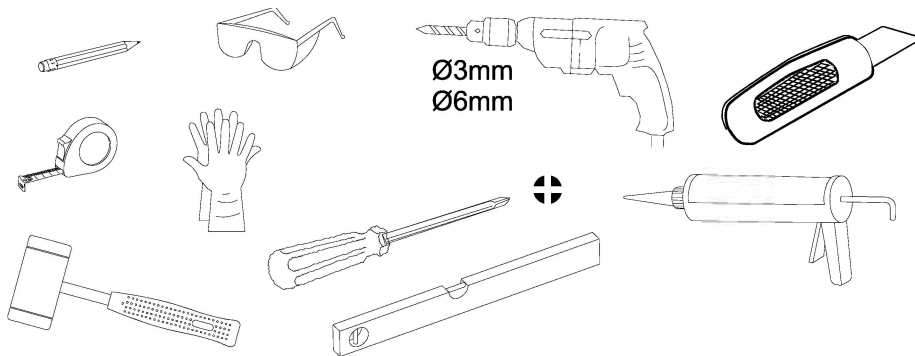
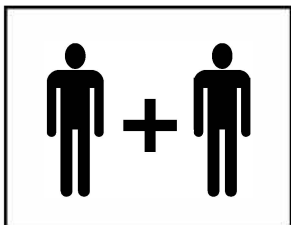
CE

EN 14428:2015(E) & EN 14527:2016(E)

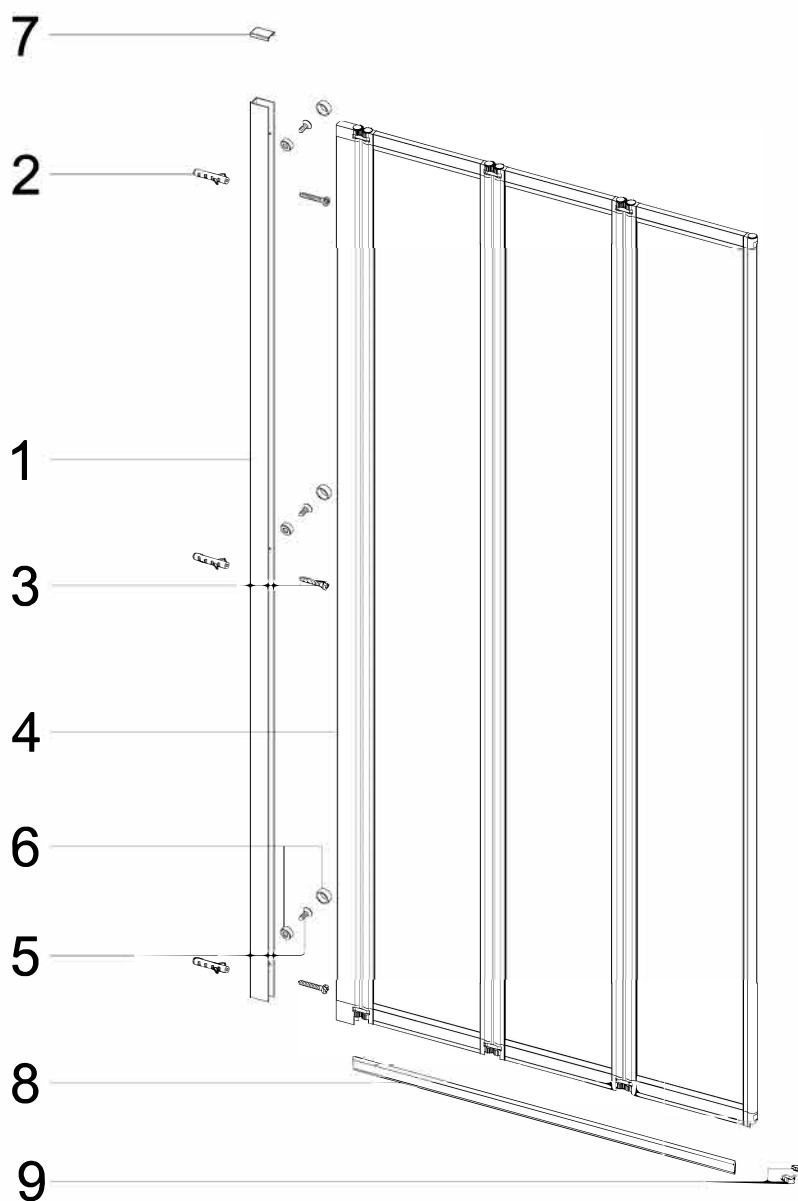


Um Ihre Duschkabine anschließen zu können, benötigen Sie zusätzlich 2 Flexschläuche (Kalt- und Warmwasseranschluss) sowie einen flexiblen Anschlussschlauch zwischen Ablauf und Ihrer Entwässerung, welche nicht im Lieferumfang enthalten sind.

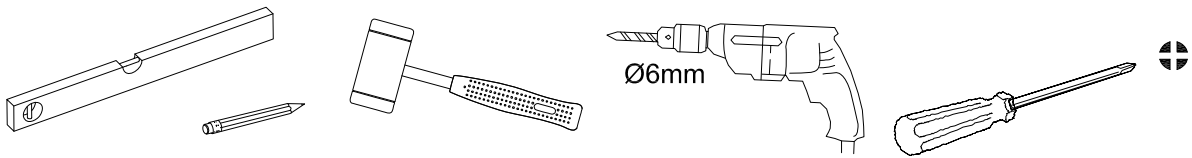
In order to be able to connect your shower cabin, you need 2 flexible shower hoses (cold and hot water hoses) and a flexible pipe between the drain and your drainage, which are not included in delivery.

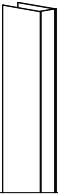
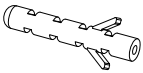



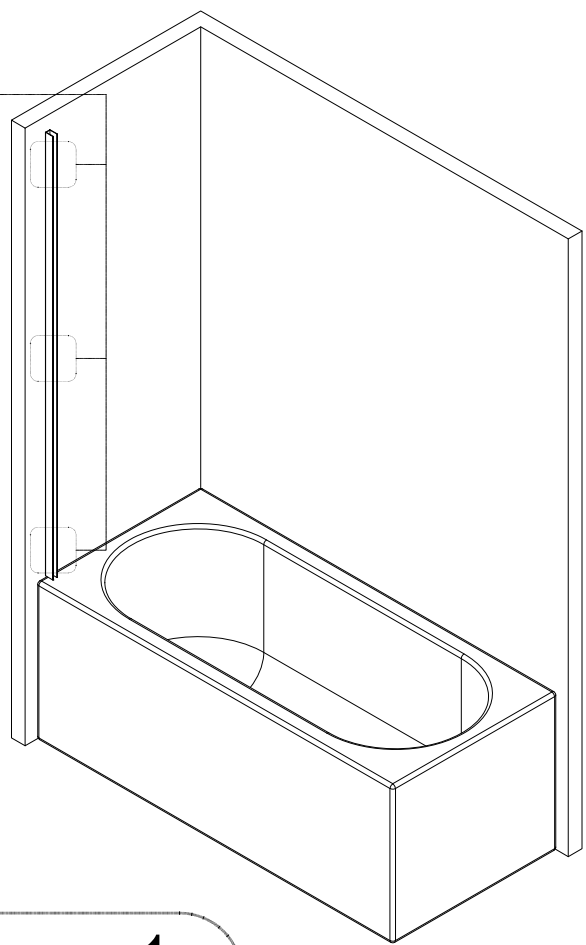
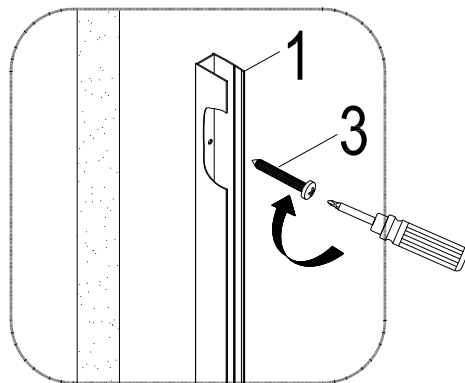
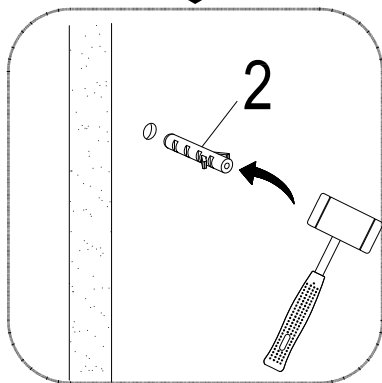
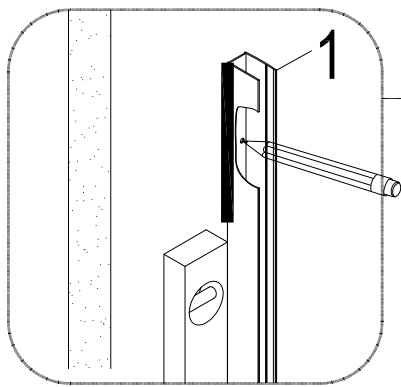
<b>1</b> AURL 1319  X1	<b>2</b> AURL 989  X3	<b>3</b> AURL 990  ST3.9X35 X3	<b>4</b>  X1	<b>5</b> AURL 991  ST3.5X10 X3	<b>6</b> AURL1000  X3	<b>7</b> AURL1001  X1	<b>8</b> AURL 1321  X1
<b>9</b> AURL 1316  X1	<b>10</b> AURL1284  X3						

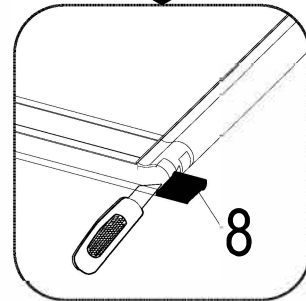
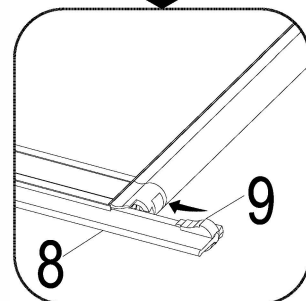
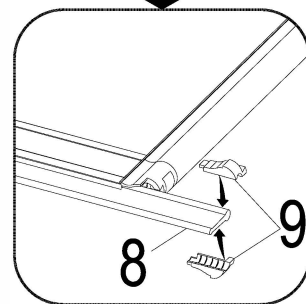
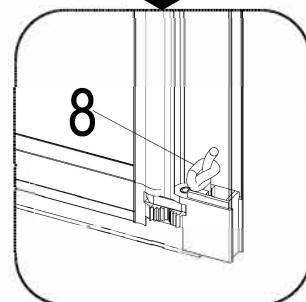
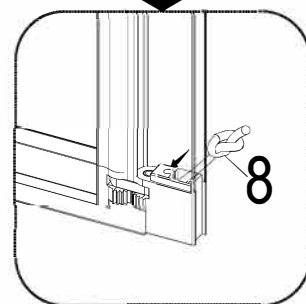
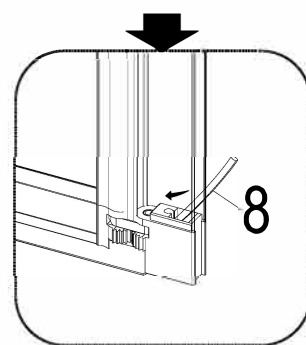
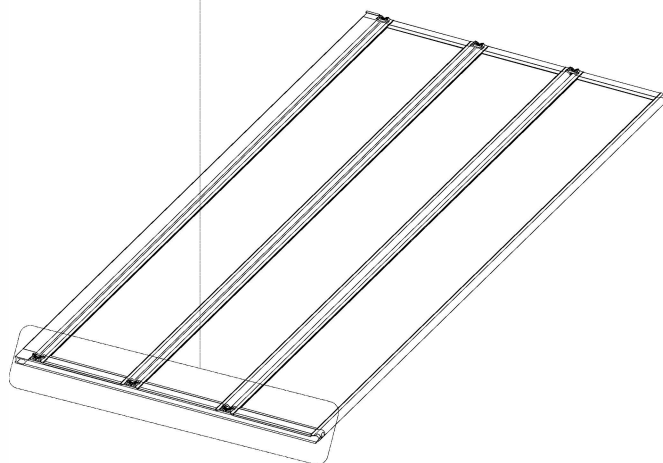
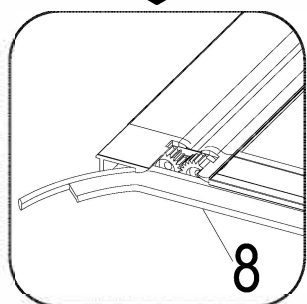
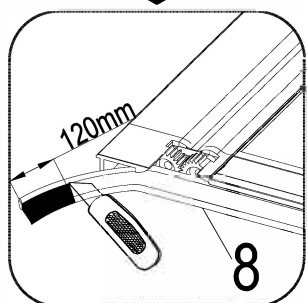
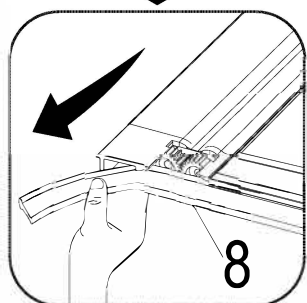
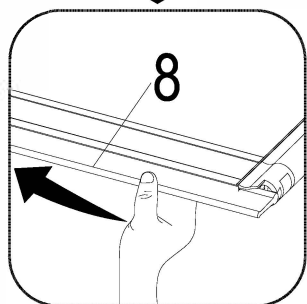
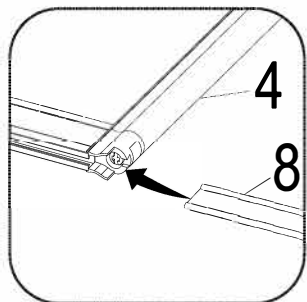
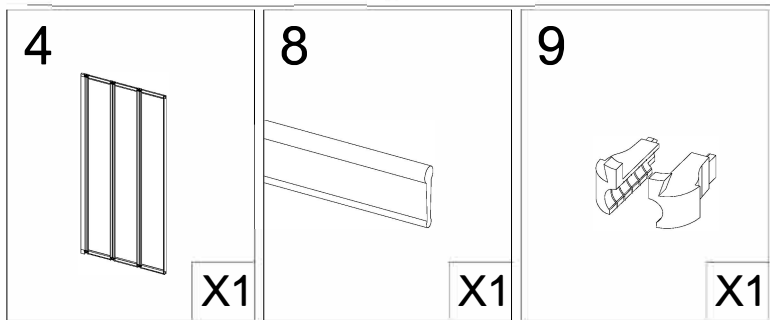
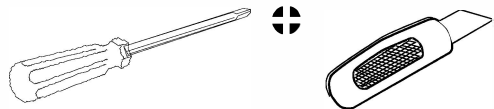


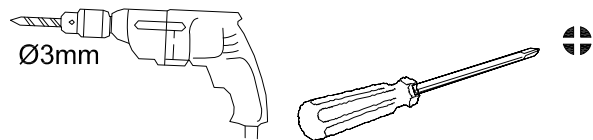
AURL 1284 - VERTICAL SEALS FOR TRIPLE  
AURL 1321 - BOTTOM SEAL TRIPLE



- |   |   |   |
|---|---|---|
| 1   | 2   | 3   |
|  |  |  |
| X1  | X3  | X3  |





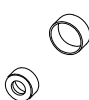


5

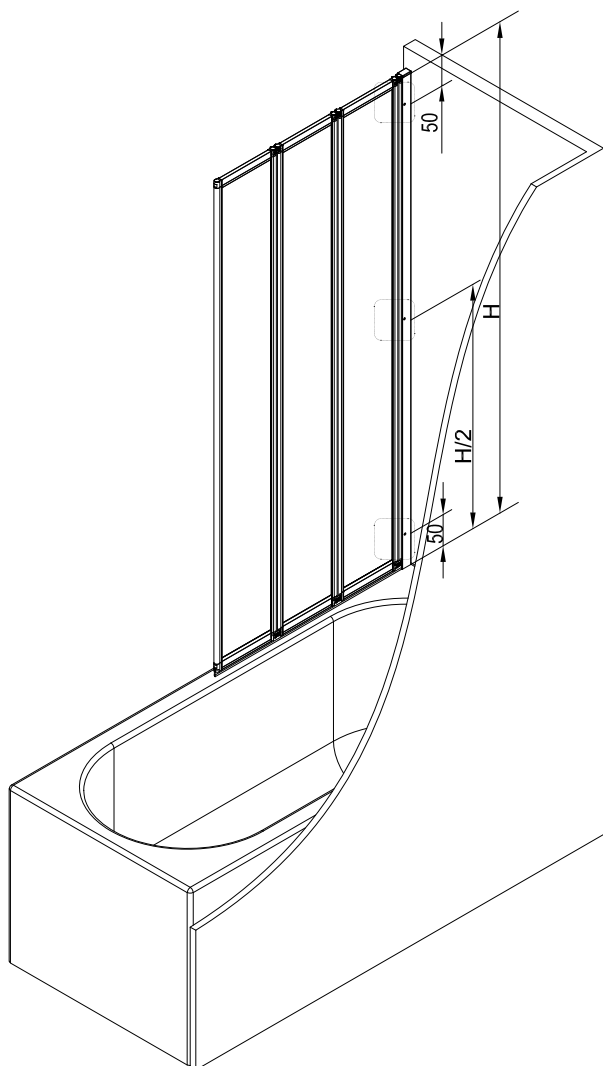
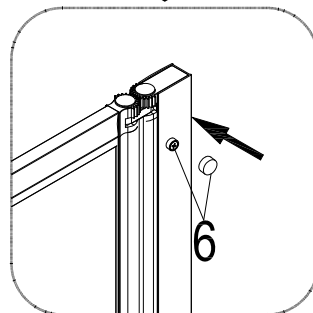
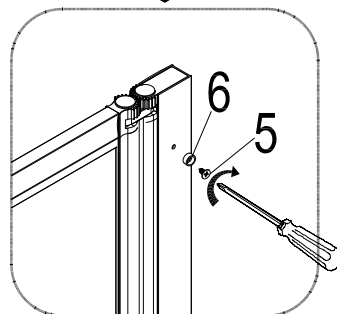
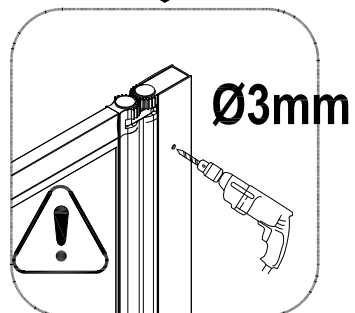
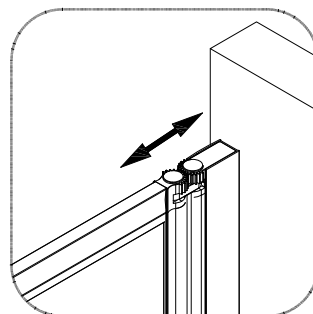
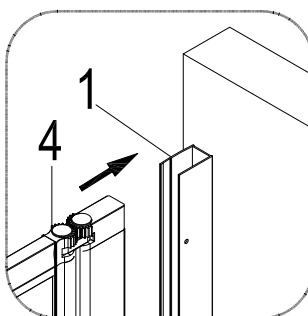
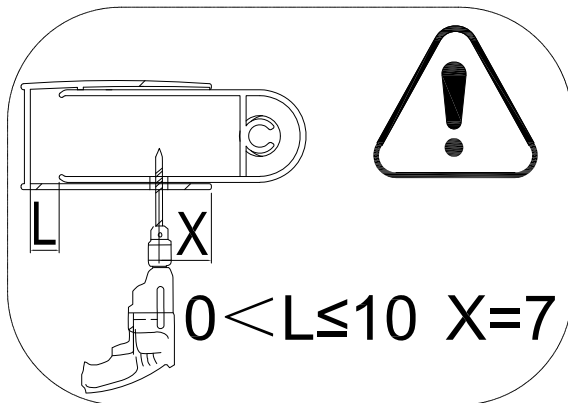
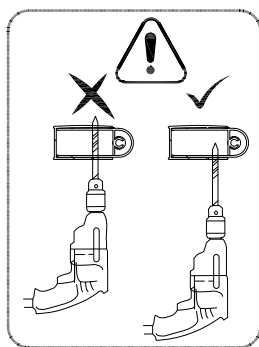


X3

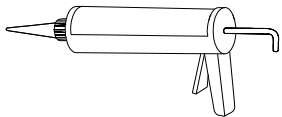
6



X3



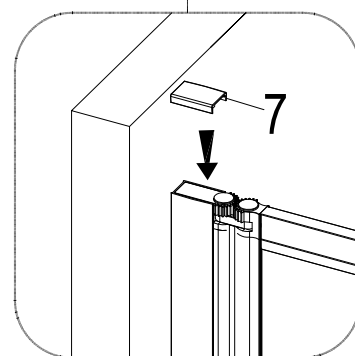
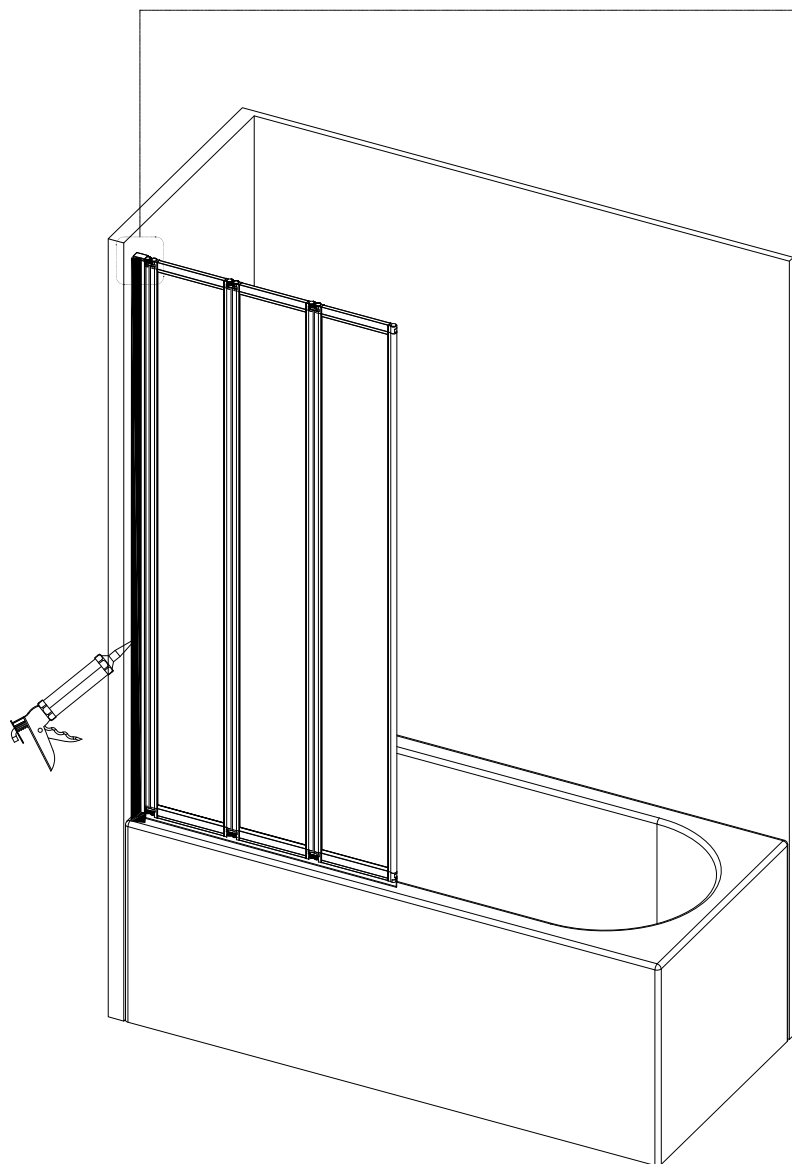
5

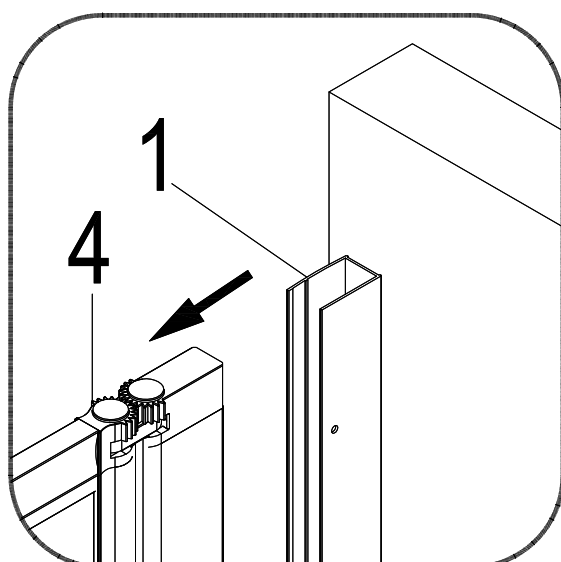
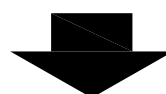
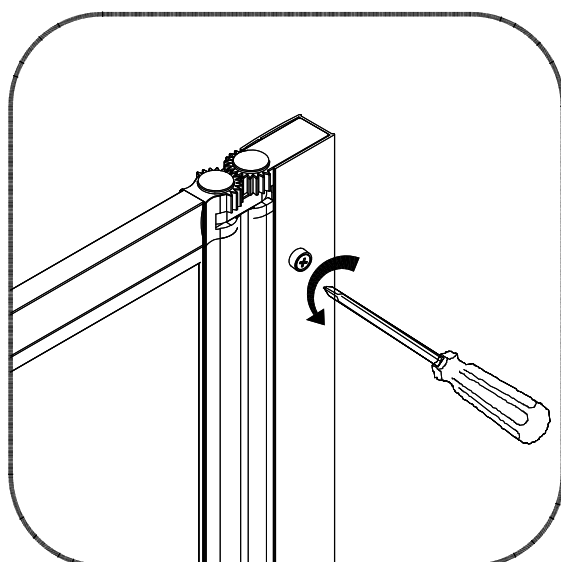
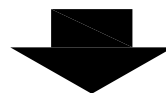
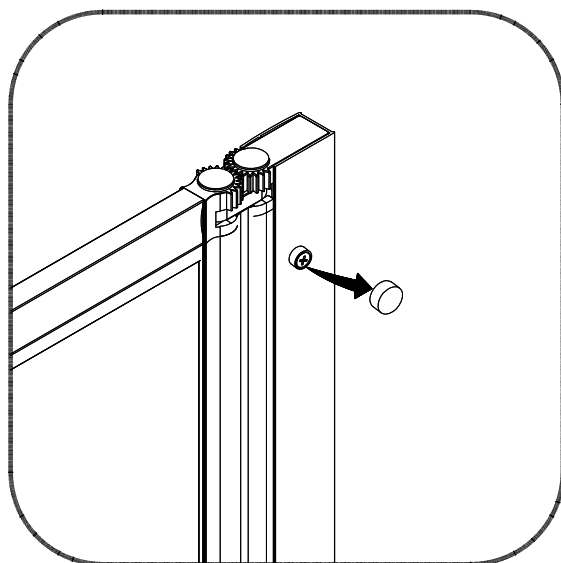
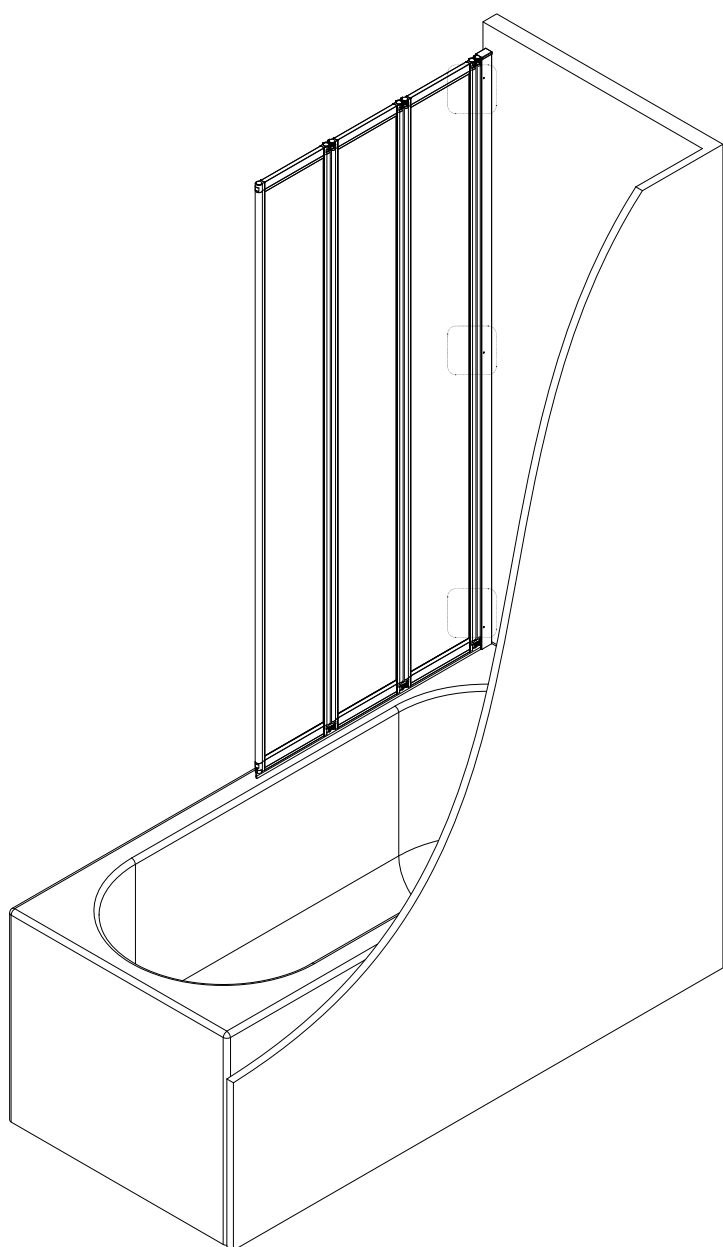
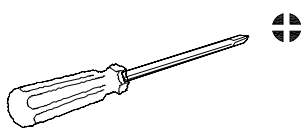


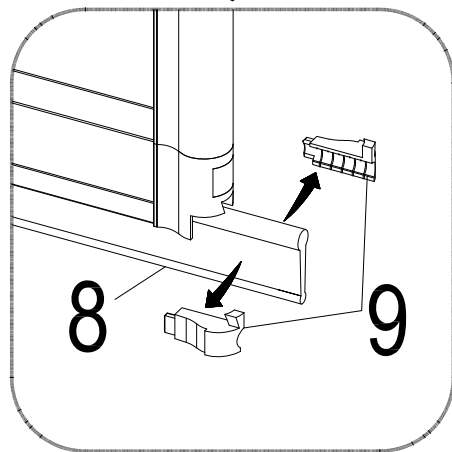
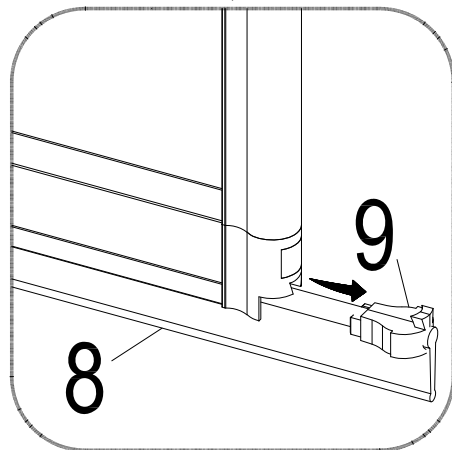
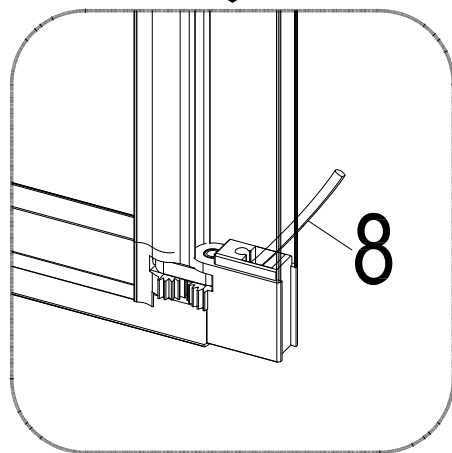
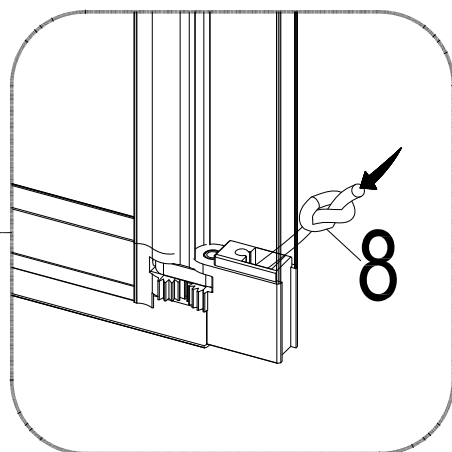
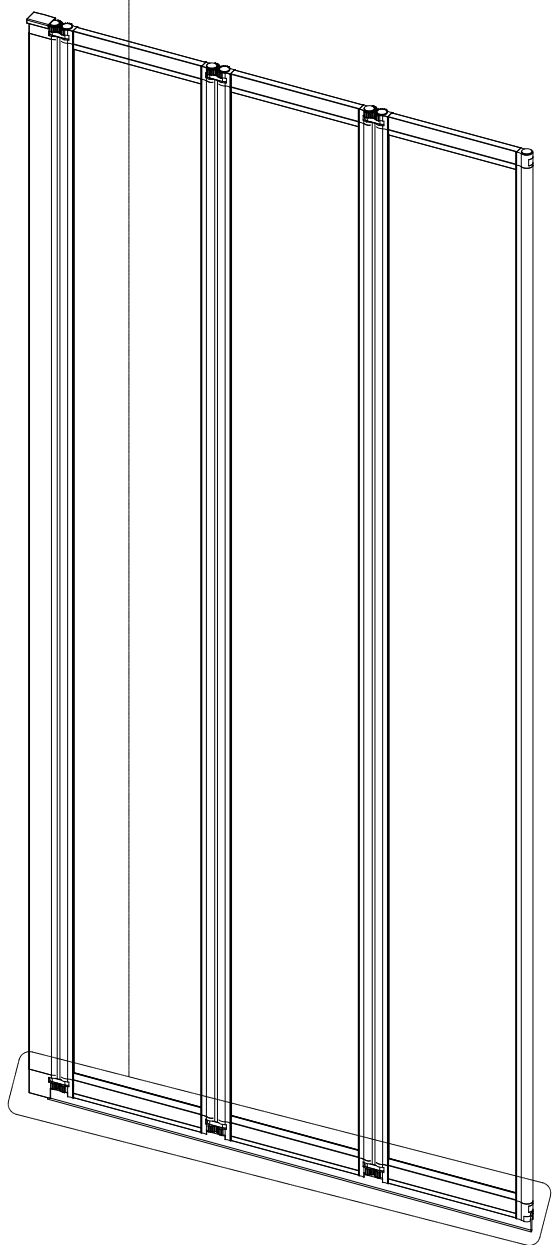
7



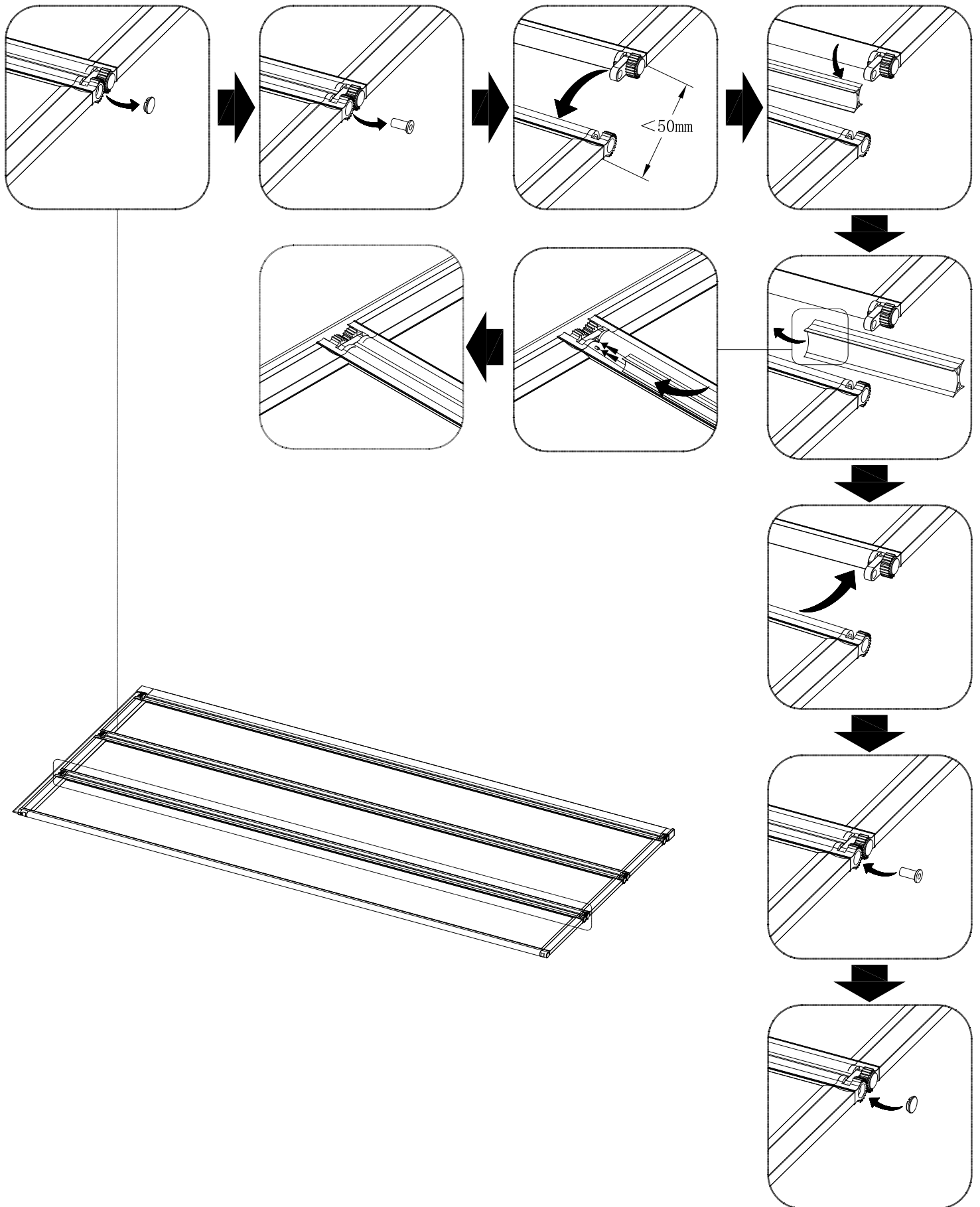
X1











# LEISTUNGSERKLÄRUNG

## N o DoP \_Duschabtrennungen

### 1. Eindeutiger Identifizierungscode für Produkttyp: Duschabtrennungen aus Glas und Aluminium

Zusätzlich gilt die vorliegende Leistungserklärung für die 9 im Anhang aufgeführten Produkte.

### 2. Vorgesehene(r) Verwendungszweck(e): ..... DUSCHABTRENNUNG FÜR DIE KÖRPERHYGIENE-PH

### 3. Hersteller: .....AURLANE DEUTSCHLAND GMBH, RÖGEN 52, 23843 BAD OLDESLOE.....

### 4. Bevollmächtigter: .....N/A.....

### 5. System(e) zur Bewertung und Überprüfung der Leistungsbeständigkeit: System 4.....

#### 6a. Harmonisierte Norm: EN14428:2015

Benannte Stelle(n): N/A

6b. Europäisches Bewertungsdokument N/A

Europäische Technische Bewertung N/A

Technische Bewertungsstelle N/A

Benannte Stelle(n) N/A

### 7. Erklärte Leistungen

Wesentliche Eigenschaften	Leistungen	Harmonisierte technische Spezifikationen
Reinigungsfähigkeit	Anforderungen erfüllt	EN14428:2015+A1:2018
Schlagfestigkeit/Brucheigenschaften	Anforderungen erfüllt	EN14428:2015+A1:2018
Haltbarkeit	Anforderungen erfüllt	EN14428:2015+A1:2018

Die Leistungsergebnisse des oben angegebenen Produktes entsprechen den erklärten Leistungen.

Entsprechend der Verordnung (EU) Nr. 305/2011 trägt der oben genannte Hersteller die alleinige Verantwortung für die Erstellung der vorliegenden Leistungserklärung.

Unterzeichnet im Namen des Herstellers durch:

Philip Mahrdt  
Managing Director of Aurlane Deutschland GmbH  
Bad Oldesloe, 10/09/2020

